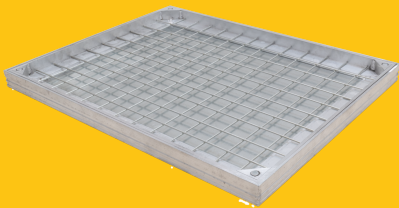


CALPRO40L/060045

Aluminium Recessed Access Cover, 600mm x 450mm clear opening, 27mm tray depth, 40mm frame depth, Loading code L



CLEAR OPENING (MM)	OVERALL TOP OF FRAME (MM)	FRAME DEPTH (MM)	LOAD DUTY
600 x 450	690 x 540	40	Domestic light duty

SPECIFICATION

General information

Stock code	CALPRO40L/060045
Primary material	Aluminium
Category	Access cover
Flanges	4
Gross laden vehicle weight	5 tn
Load duty	Domestic light duty
Slow moving wheel load (pneumatic tyres)	1.25 tn
Seal type	Triple seal

Standards, classes and groupings

Wrekin loading code	L
---------------------	---

Dimensions

Overall top of frame (A x B)	540 mm x 690 mm
Clear opening (C x D)	600 mm x 450 mm
Frame depth (E)	40mm
Base opening (F x G)	

1. Wrekin Products Ltd is continually seeking to improve our products and therefore reserves the right to alter product specifications without prior notice.
2. It is the responsibility of all users to satisfy themselves the above data is current.
3. Installation details are available on request.
4. All Wrekin products are supplied subject to our [Terms and Conditions of Sale](#)

