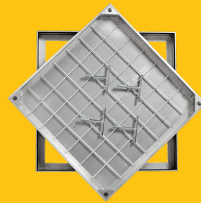


CALPRO80N/075060

Aluminium Recessed Access Cover, 750mm x 600mm clear opening, 65mm tray depth, 80mm frame depth, Loading code N



CLEAR OPENING (MM)	OVERALL TOP OF FRAME (MM)	FRAME DEPTH (MM)	LOAD DUTY
750 x 600	840 x 690	80	Medium duty

SPECIFICATION

General information

Stock code	CALPRO80N/075060
Primary material	Aluminium
Category	Access cover
Flanges	4
Gross laden vehicle weight	25 tn
Load duty	Medium duty
Slow moving wheel load (pneumatic tyres)	5 tn
Seal type	Triple seal

Standards, classes and groupings

Wrekin loading code	N
---------------------	---

Dimensions

Overall top of frame (A x B)	690 mm x 840 mm
Clear opening (C x D)	750 mm x 600 mm
Frame depth (E)	80mm
Base opening (F x G)	

1. Wrekin Products Ltd is continually seeking to improve our products and therefore reserves the right to alter product specifications without prior notice.
2. It is the responsibility of all users to satisfy themselves the above data is current.
3. Installation details are available on request.
4. All Wrekin products are supplied subject to our [Terms and Conditions of Sale](#)

