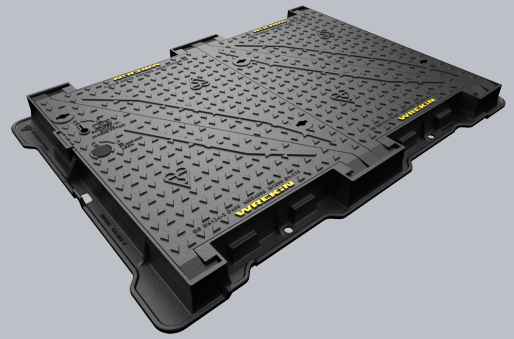
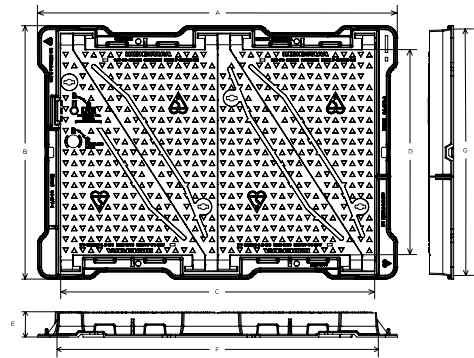


DMH0D4/1383/K

Vault D400 manhole cover 1300mm x 850mm clear opening with 100mm frame depth



CHARACTERISTIC	VALUE
Range	Vault
Clear opening (mm)	1,300 x 850
Overall frame (mm)	1,490 x 1,050
Frame depth (mm)	100
Options	<ul style="list-style-type: none"> ▶ Flood and odour control plate ▶ Safety grille ▶ Pressure relief holes



SPECIFICATION

GENERAL INFORMATION

Stock code	DMH0D4/1383/K
Primary material	Ductile iron
Range	Vault
Category	Manhole cover
Flanges	4

STANDARDS, CLASSES AND GROUPINGS

Standards	BS EN 124-2 BRE PN111 DMRB MCHW
BS EN 124 Class	D400
BS EN 124 Group	4
Third party certified	BRE LPCB Kitemark

DIMENSIONS

Frame shape	Rectangular
Manhole shape	Rectangular
Overall frame (A x B)	1,490 mm x 1,050 mm
Clear opening (C x D)	1,300 mm x 850 mm
Frame depth (E)	100mm
Base opening (F x G)	1,325 mm x 875 mm

EPD DATA

Total life cycle (cradle to grave)	477.15 kg CO ₂ equivalent
------------------------------------	--------------------------------------



FEATURES

Tel: 01543 440 440
 Fax: 01543 440 444
info@wrekinproducts.com
wrekinproducts.com



- ✓ The enlarged frame corners help to dissipate loads onto the foundation, providing a longer service life and increased reliability.
- ✓ Indexed corners ensure correct orientation first time, every time.
- ✓ Features an LPCB Level 3 lock, offering an unrivalled level of high security.
- ✓ Safety keyway prevents accidental disengagement of the lifting key during the handling process.
- ✓ Safety-stop hinges prevent covers from falling once opened.
- ✓ Covers open sequentially, with standard BS7903 lifting keys.
- ✓ Mechanical lifting points are provided.
- ✓ 70+ PSRV tested at top surface of chequer by UKAS accredited 3rd party.
- ✓ Secured with a turnbuckle lock.

AVAILABLE OPTIONS

- ✓ **Flood and odour control plate**
The flood and odour control plate is manufactured from steel and provides resistance to flood-water ingress and the chamber-odour egress.
- ✓ **Pressure relief holes**
Pressure relief holes provide additional airflow, with sizes permitted up to the maximum allowances specified in BS EN 124.
- ✓ **Safety grille**
Safety grilles prevent accidental chamber falls. Available in a variety of configurations; including bars and mesh as drop-in or hinged.

ACCESSORIES

STOCK CODE	DESCRIPTION
PC/UNIFORM/151076	Uniform chamber adjustment unit 760mm x 100mm x 15mm
PC/UNIFORM/251076	Uniform chamber adjustment unit 760mm x 100mm x 25mm
PC/UNIWEDGE/755012	Uniform support wedge 120mm x 50mm x 75mm
YPCR/U12.5	12.5Kg Unipak® rapid curing polyester resin mortar
YPCR/U25	25Kg Unipak® rapid curing polyester resin mortar
KEY/MC	Lifting key for turnbuckle lock on our Vault range of covers
KEYS/L	Small cover combined lifting key
KEY/LONG	Large cover lifting keys with a long handle (sold as a pair)
GRITBLOCKER	Anti-blockage keyway insert
SCREWLIFT	Simple and rapid manhole frame levelling system. Simply push the bushes into the holes in the flange and adjust the levelling screws to the required height.

- ▶ Wrekin Products Ltd is continually seeking to improve our products and therefore reserves the right to alter product specifications without prior notice.
- ▶ It is the responsibility of all users to satisfy themselves the above data is current.
- ▶ All values stated are nominal within 2.5% tolerance.
- ▶ Installation details are available in the [knowledge base](#).
- ▶ All Wrekin products are supplied subject to our [Terms and Conditions of Sale](#).

