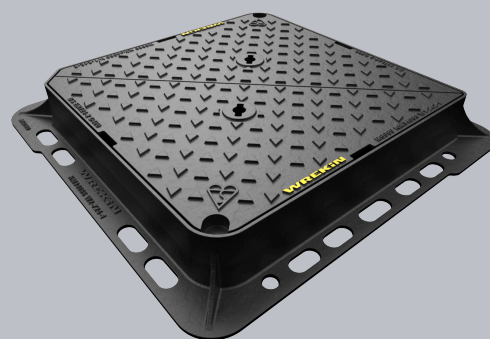
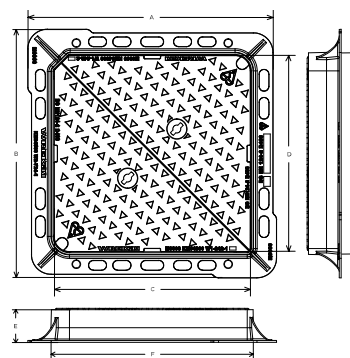


DMTOD4/6060/KT

Tristar D400 manhole cover 600mm x 600mm clear opening with 100mm frame depth



CHARACTERISTIC	VALUE
Range	Tristar
Clear opening (mm)	600 x 600
Overall frame (mm)	760 x 760
Frame depth (mm)	100
Options	<ul style="list-style-type: none"> ▶ Screw locking ▶ Standard badging ▶ Flood and odour control plate ▶ Pressure relief holes



SPECIFICATION

GENERAL INFORMATION

Stock code	DMTOD4/6060/KT
Primary material	Ductile iron
Range	Tristar
Category	Manhole cover
Flanges	4

STANDARDS, CLASSES AND GROUPINGS

Standards	BS EN 124-2
BS EN 124 Class	D400
BS EN 124 Group	4
Third party certified	Kitemark

DIMENSIONS

Frame shape	Square
Manhole shape	Square
Overall frame (A x B)	760 mm x 760 mm
Clear opening (C x D)	600 mm x 600 mm
Frame depth (E)	100mm
Base opening (F x G)	620 mm x 620 mm

EPD DATA

Total life cycle (cradle to grave)	125.8 kg CO ₂ equivalent
------------------------------------	-------------------------------------



FEATURES

Tel: 01543 440 440
 Fax: 01543 440 444
info@wrekinproducts.com
wrekinproducts.com



KM 34066

PM 32898

EMS 758038

- ✓ The enlarged frame corners help to dissipate loads onto the foundation, providing a longer service life and increased reliability.
- ✓ Indexed corners ensure correct orientation first time, every time.
- ✓ Safety keyway prevents accidental disengagement of the lifting key during the handling process.
- ✓ 70+ PSRV tested at top surface of chequer by UKAS accredited 3rd party.

AVAILABLE OPTIONS

- ✓ **Screw locking**
Screw locking deters unauthorised access to the chamber. An extended shank socket set is required to engage the locking screw.
- ✓ **Industry standard badging**
Integral industry-standard badging e.g. SW (Storm Water) and FW (Foul Water). Details are taken at point of order.
- ✓ **Flood and odour control plate**
The flood and odour control plate is manufactured from steel and provides resistance to flood-water ingress and the chamber-odour egress.
- ✓ **Pressure relief holes**
Pressure relief holes provide additional airflow, with sizes permitted up to the maximum allowances specified in BS EN 124.

ACCESSORIES

STOCK CODE	DESCRIPTION
PC/UNIFORM/151076	Uniform chamber adjustment unit 760mm x 100mm x 15mm
PC/UNIFORM/251076	Uniform chamber adjustment unit 760mm x 100mm x 25mm
PC/UNIWEDGE/755012	Uniform support wedge 120mm x 50mm x 75mm
YPCR/U12.5	12.5Kg Unipak [®] rapid curing polyester resin mortar
YPCR/U25	25Kg Unipak [®] rapid curing polyester resin mortar
GRITBLOCKER	Anti-blockage keyway insert
SCREWLIFT	Simple and rapid manhole frame levelling system. Simply push the bushes into the holes in the flange and adjust the levelling screws to the required height.
KEY/LONG	Large cover lifting keys with a long handle (sold as a pair)
KEYS/L	Small cover combined lifting key
CLICKLIFT6030	Clicklift manhole cover frame raising system 600 x 600 x 30mm
CLICKLIFT6040	Clicklift manhole cover frame raising system 600 x 600 x 40mm
CLICKLIFT6050	Clicklift manhole cover frame raising system 600 x 600 x 50mm
CLICKLIFT6060	Clicklift manhole cover frame raising system 600 x 600 x 60mm
ARMMSHELL/6060	Armadillo manhole cover protector shell 615mm x 615mm (compatible with Tristar and Highway D400 600mm x 600mm manhole covers)

NOTES

The use of Armadillo is recommended where exposure to construction site traffic is likely

- ▶ Wrekin Products Ltd is continually seeking to improve our products and therefore reserves the right to alter product specifications without prior notice.
- ▶ It is the responsibility of all users to satisfy themselves the above data is current.
- ▶ All values stated are nominal within 2.5% tolerance.
- ▶ Installation details are available in the [knowledge base](#).
- ▶ All Wrekin products are supplied subject to our [Terms and Conditions of Sale](#).

