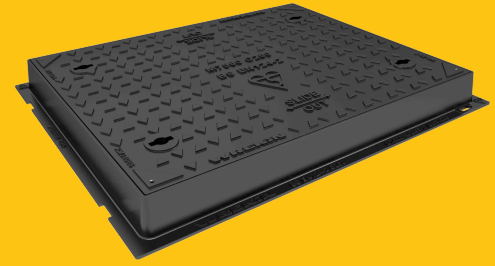


DMS1C3/7560/K

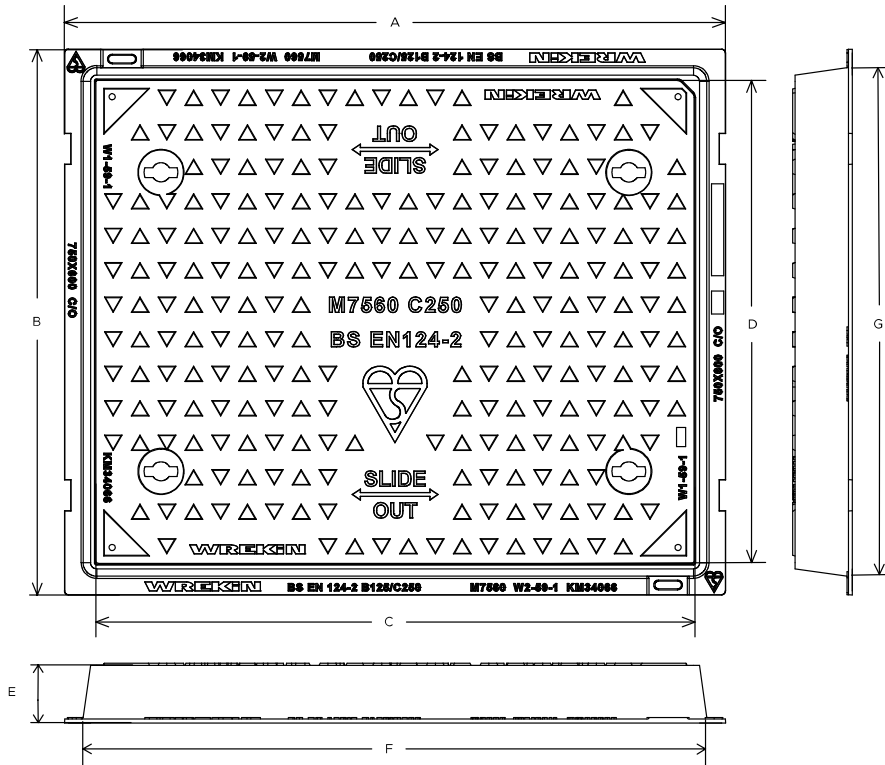
Safeseal C250 manhole cover 750mm x 600mm clear opening with 75mm frame depth



| RANGE | CLEAR OPENING (MM) | OVERALL FRAME (MM) | FRAME DEPTH (MM) | OPTIONS |
|----------|--------------------|--------------------|------------------|---|
| Safeseal | 750 x 600 | 860 x 710 | 75 | <input type="checkbox"/> Screw locking <input type="checkbox"/> Neoprene seal <input type="checkbox"/> Integral badging <input type="checkbox"/> Ventilation holes <input type="checkbox"/> Flood and odour control plate <input type="checkbox"/> Safety grille |

KEY FEATURES

- ✓ Indexed corners ensure correct orientation first time, every time.
- ✓ Safety keyway prevents accidental disengagement of the lifting key during the handling process.
- ✓ Designed with tapered sides and centralised lifting points to allow the cover to slide out of the frame.
- ✓ Labyrinth seal helps to prevent odour escapes and water ingress.
- ✓ 70+ PSRV tested at top surface of chequer by UKAS accredited 3rd party.



SPECIFICATION

General information

| | |
|------------------|---------------|
| Stock code | DMS1C3/7560/K |
| Primary material | Ductile iron |
| Range | Safeseal |
| Category | Manhole cover |
| Flanges | 4 |

Standards, classes and groupings

| | |
|-----------------|-------------|
| Standards | BS EN 124-2 |
| BS EN 124 Class | C250 |
| BS EN 124 Group | 3 |

Third party certified

Kitemark

Dimensions

Frame shape

Rectangular

Manhole shape

Rectangular

Overall frame (A x B)

860 mm x 710 mm

Clear opening (C x D)

750 mm x 600 mm

Frame depth (E)

75mm

Base opening (F x G)

800 mm x 650 mm

AVAILABLE OPTIONS

✓ Screw locking

Screw locking deters unauthorised access to the chamber. An extended shank socket set is required to engage the locking screw.

✓ Industry standard badging

Integral industry-standard badging e.g. SW (Storm Water) and FW (Foul Water). Details are taken at point of order.

✓ Flood and odour control plate

The flood and odour control plate is manufactured from steel and provides resistance to flood-water ingress and the chamber-odour egress.

✓ Neoprene seal

A neoprene seal can be included to reduce ingress and egress of dirt and gasses from the chamber.

✓ Ventilation holes

Provide additional cover ventilation in addition to the product's natural ventilation, up to the BS EN 124 allowance.

✓ Safety grille

Safety grilles prevent accidental chamber falls. Available in a variety of configurations; including bars and mesh as drop-in or hinged.

ACCESSORIES

| STOCK CODE | DESCRIPTION |
|--------------------|--|
| PC/UNIFORM/151076 | Uniform chamber adjustment unit 760mm x 100mm x 15mm |
| PC/UNIFORM/251076 | Uniform chamber adjustment unit 760mm x 100mm x 25mm |
| PC/UNIWEDGE/755012 | Uniform support wedge 120mm x 50mm x 75mm |
| YPCR/U12.5 | 12.5Kg Unipak® rapid curing polyester resin mortar |

| STOCK CODE | DESCRIPTION |
|------------|--|
| YPCR/U25 | 25Kg Unipak® rapid curing polyester resin mortar |
| KEY/LONG | Large cover lifting keys with a long handle (sold as a pair) |
| KEYS/L | Small cover combined lifting key |
| KEYSHEAVY | Large cover lifting keys with a standard handle (sold as a pair) |

NOTES

All values stated are nominal within 2.5% tolerance.

1. Wrekin Products Ltd is continually seeking to improve our products and therefore reserves the right to alter product specifications without prior notice.
2. It is the responsibility of all users to satisfy themselves the above data is current.
3. Installation details are available on request.
4. All Wrekin products are supplied subject to our [Terms and Conditions of Sale](#)

