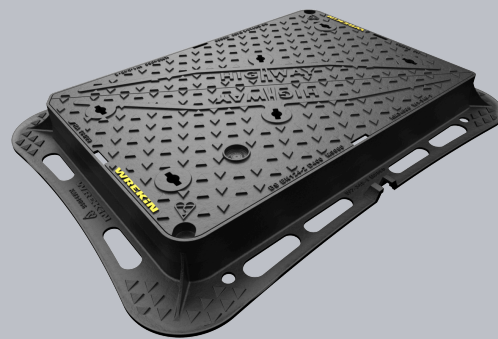
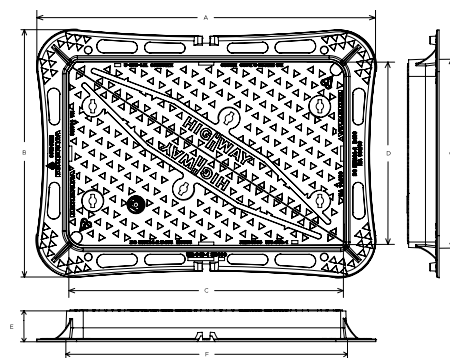


DMTOD4/9060/KH

Highway D400 manhole cover 900mm x 600mm clear opening with 100mm frame depth



| CHARACTERISTIC | VALUE |
|--------------------|--|
| Range | Highway |
| Clear opening (mm) | 900 x 600 |
| Overall frame (mm) | 1,115 x 815 |
| Frame depth (mm) | 100 |
| Options | <ul style="list-style-type: none"> ► Screw locking ► Standard badging ► Flood and odour control plate ► Safety grille ► ID and comms badging ► Pressure relief holes |



SPECIFICATION

GENERAL INFORMATION

| | |
|------------------|----------------|
| Stock code | DMTOD4/9060/KH |
| Primary material | Ductile iron |
| Range | Highway |
| Category | Manhole cover |
| Flanges | 4 |

STANDARDS, CLASSES AND GROUPINGS

| | |
|-----------------------|--|
| Standards | BS EN 124-2 DMRB MCHW CD 534 v0.1.0 |
| BS EN 124 Class | D400 |
| BS EN 124 Group | 4 |
| Third party certified | Kitemark |

DIMENSIONS

| | |
|-----------------------|-------------------|
| Frame shape | Rectangular |
| Manhole shape | Rectangular |
| Overall frame (A x B) | 1,115 mm x 815 mm |
| Clear opening (C x D) | 900 mm x 600 mm |
| Frame depth (E) | 100mm |
| Base opening (F x G) | 925 mm x 625 mm |

EPD DATA

| | |
|------------------------------------|-------------------------------------|
| Total life cycle (cradle to grave) | 216.9 kg CO ₂ equivalent |
|------------------------------------|-------------------------------------|



FEATURES

- ✓ The enlarged frame corners help to dissipate loads onto the foundation, providing a longer service life and increased reliability.
- ✓ A retrofittable ID badge can be fitted, also compatible with antennas and communication options (RFID, NFC, IoT)
- ✓ Safety keyway prevents accidental disengagement of the lifting key during the handling process.
- ✓ 70+ PSRV tested at top surface of chequer by UKAS accredited 3rd party.
- ✓ Meets the requirements of CD 534 v0.1.0 (formerly HA 104/09).
- ✓ Frame gussets are supports which reinforce the corners where the frame sections meet, distributing stress evenly, preventing damage to the frame or the access cover.
- ✓ The high seating position ensures that forces are transmitted more directly downwards, meaning conversion of traffic loads into mortar-compatible compression forces.
- ✓ Indexed corners ensure correct orientation first time, every time.
- ✓ Keyway lifting points are provided on the frame for safe handling.
- ✓ Holes in the frame flange where mortar can pass between the underside and top side, creating an interlock, providing greater strength.
- ✓ Surface texturing above and below the flange enables better mortar engagement, reducing any lateral movement which could result in cracking.
- ✓ Non rocking 3-point suspension design, for silent operation.

AVAILABLE OPTIONS

- ✓ **Screw locking**
Screw locking deters unauthorised access to the chamber. An extended shank socket set is required to engage the locking screw.
- ✓ **Industry standard badging**
Integral industry-standard badging e.g. SW (Storm Water) and FW (Foul Water). Details are taken at point of order.
- ✓ **Flood and odour control plate**
The flood and odour control plate is manufactured from steel and provides resistance to flood-water ingress and the chamber-odour egress.
- ✓ **Safety grille**
Safety grilles prevent accidental chamber falls. Available in a variety of configurations; including bars and mesh as drop-in or hinged.
- ✓ **ID badging and communications options**
Bespoke badging and communications antennae, including NFC, RFID and IoT technology.
- ✓ **Pressure relief holes**
Pressure relief holes provide additional airflow, with sizes permitted up to the maximum allowances specified in BS EN 124.

ACCESSORIES

| STOCK CODE | DESCRIPTION |
|--------------------|--|
| PC/UNIFORM/151076 | Uniform chamber adjustment unit 760mm x 100mm x 15mm |
| PC/UNIFORM/251076 | Uniform chamber adjustment unit 760mm x 100mm x 25mm |
| PC/UNIWEDGE/755012 | Uniform support wedge 120mm x 50mm x 75mm |
| YPCR/U12.5 | 12.5Kg Unipak [®] rapid curing polyester resin mortar |
| YPCR/U25 | 25Kg Unipak [®] rapid curing polyester resin mortar |

Tel: 01543 440 440
Fax: 01543 440 444
info@wrekinproducts.com
wrekinproducts.com



| STOCK CODE | DESCRIPTION |
|-------------|--|
| GRITBLOCKER | Anti-blockage keyway insert |
| SCREWLIFT | Simple and rapid manhole frame levelling system. Simply push the bushes into the holes in the flange and adjust the levelling screws to the required height. |
| KEY/LONG | Large cover lifting keys with a long handle (sold as a pair) |
| KEYS/L | Small cover combined lifting key |

- Wrekin Products Ltd is continually seeking to improve our products and therefore reserves the right to alter product specifications without prior notice.
- It is the responsibility of all users to satisfy themselves the above data is current.
- All values stated are nominal within 2.5% tolerance.
- Installation details are available in the [knowledge base](#).
- All Wrekin products are supplied subject to our [Terms and Conditions of Sale](#).