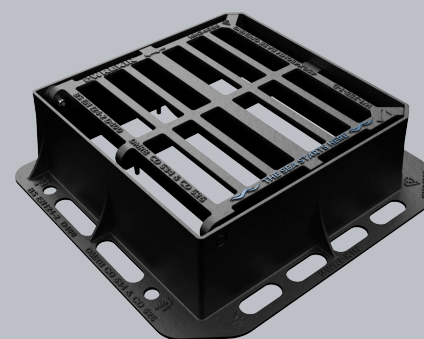
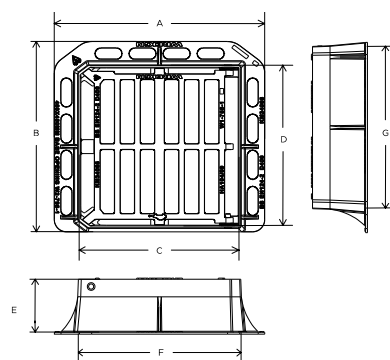


DGHOD6/4545/KT

Tristar D400 3 flange gully grate 430mm x 430mm clear opening with 150mm frame depth



CHARACTERISTIC	VALUE
Range	Tristar
Clear opening (mm)	430 x 430
Base opening (mm)	450 x 450
Overall frame (mm)	575 x 520
Frame depth (mm)	150
Waterway area (cm ²)	1,250
Options	► Screw locking



SPECIFICATION

GENERAL INFORMATION

Stock code	DGHOD6/4545/KT
Primary material	Ductile iron
Range	Tristar
Category	Gully grate
Flanges	3

STANDARDS, CLASSES AND GROUPINGS

Standards	BS EN 124-2 CD 526 (formerly HA 102/17) CD 534 (formerly HA 104/09)
BS EN 124 Class	D400
BS EN 124 Group	3 4
Third party certified	Kitemark
CD 526 hydraulic capacity	R

DIMENSIONS

Frame shape	Rectangular
Manhole shape	Rectangular
Overall frame (A x B)	575 mm x 520 mm
Clear opening (C x D)	430 mm x 430 mm
Frame depth (E)	150mm
Base opening (F x G)	450 mm x 450 mm
Waterway area	1,250cm ²

EPD DATA

Total life cycle (cradle to grave)	70.55 kg CO ₂ equivalent
------------------------------------	-------------------------------------



FEATURES

- ✓ Captive hinges reduce theft risk whilst allowing easy lifting.

AVAILABLE OPTIONS

- ✓ **Screw locking**
Screw locking deters unauthorised access to the chamber.
An extended shank socket set is required to engage the locking screw.

ACCESSORIES

STOCK CODE	DESCRIPTION
PC/UNIFORM/151076	Uniform chamber adjustment unit 760mm x 100mm x 15mm
PC/UNIFORM/251076	Uniform chamber adjustment unit 760mm x 100mm x 25mm
PC/UNIWEDGE/755012	Uniform support wedge 120mm x 50mm x 75mm
YPCR/U12.5	12.5Kg Unipak® rapid curing polyester resin mortar
YPCR/U25	25Kg Unipak® rapid curing polyester resin mortar

NOTES

- ▶ The use of Armadillo is recommended where exposure to construction site traffic is likely.
- ▶ The D400 load capability of these Group 3 products also offers the benefit of making them suitable for exposure to Group 4 traffic types. Where 3-flange D400 Gully Grate assemblies are employed, we recommend that they are installed against a kerb, not in an open highway location.

The Sea Starts Here

We've taken a notable step in environmental advocacy by updating our most popular Tristar gully gratings to include the phrase "The Sea Starts Here". This initiative aims to highlight the critical issue of water pollution among communities and the wider industry. The message serves as a poignant reminder that our actions on land reverberate through to our oceans, urging us to consider how we dispose of waste and the long-term effects on marine ecosystems. [Find out more.](#)

- ▶ Wrekin Products Ltd is continually seeking to improve our products and therefore reserves the right to alter product specifications without prior notice.
- ▶ It is the responsibility of all users to satisfy themselves the above data is current.
- ▶ All values stated are nominal within 2.5% tolerance.
- ▶ Installation details are available in the [knowledge base](#).
- ▶ All Wrekin products are supplied subject to our [Terms and Conditions of Sale](#).