



**CLICKLIFT™**

RAPID MANHOLE COVER FRAME RAISING SYSTEM

**PRODUCT SPOTLIGHT**



# CLICKLIFT

## MANHOLE COVER FRAME RAISING SYSTEM

Clicklift removes the time and resources required to dig out and reinstall manhole frames to suit the final adoptable road surface. This eliminates the potential damage to manhole covers during construction, minimises disruption and removes the potential for residents claims for damage to their vehicles.

### READY, STEADY, CLICKLIFT!

Fully Kitemarked by BSI, Clicklift provides housing developers and contractors with huge savings in terms of time, money and hassle. Allowing a single cover and frame installation to be raised, ready for final surfacing in approximately 30 seconds.

Clicklift raises 600 x 600mm and 675 x 675mm Tristar and Highway D400 manhole frames to suit the final surface layer without the need for digging out and re-installing. This requires no confined space training or specialist tooling.

Due to the speed in which Clicklift can be used, there is no need for raised ironworks on site. Simply install Clicklift just prior to the final surfacing layer being laid.

Available with four fixed incremental raising heights, 30mm, 40mm, 50mm and 60mm, Clicklift offers contractors and developers huge time and cost savings, as well as eliminating common nuisance issues for residents on new build developments.



**NO MORE LETTER DROPS**



**NO MORE INCONVENIENCED RESIDENTS**



**NO MORE CLOSED ROADS**



**NO MORE RESIDENTS CLAIMS**





## KNOW YOUR ENEMY...

When selecting D400 covers for developments, it's worth noting that the forces exerted by site traffic will often exceed those for which the covers were designed. Metal tracks, rollers and solid tyres all have a high point loading.

Clicklift can offer protection by not having the manhole cover protrude from the road surface during construction. Further protection can be achieved with Armadillo, our manhole cover and gully grate protector shell system.

**Read more on page 8.**



# CLICKLIFT FEATURES

## 1 Robust frame reinforcement

Durable and robust frame top.

## 2 Engagement skirt

A series of interlocking features that provide the Clicklift with reinforcement from lateral forces.

## 3 Indexed corner

Ensure correct orientation first time, every time and provides stability under traffic conditions.

## 4 Clicklift tabs

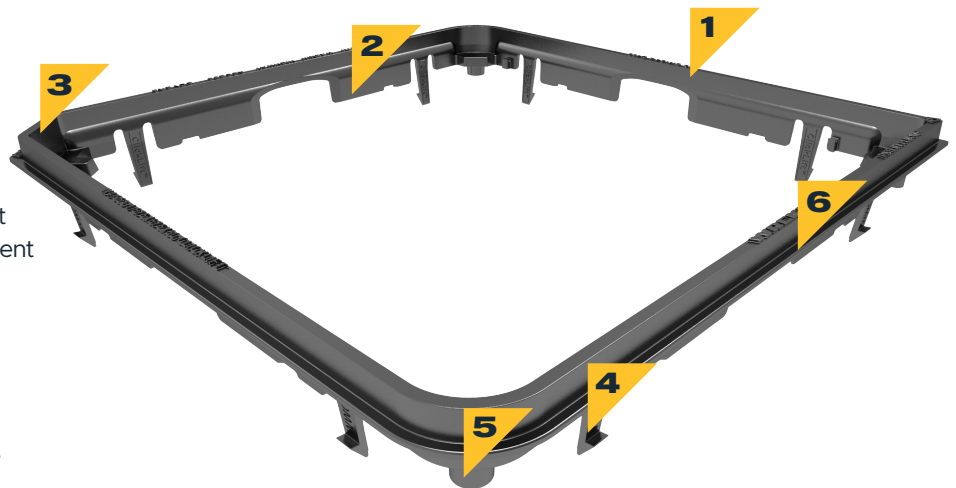
Designed to keep Clicklift in place throughout its service life by engaging with and clicking into standard Tristar and Highway frames.

## 5 Seat load-transfer boss

Directly engaging with originally installed frame seats, traffic load is transferred efficiently into the substructure.

## 6 Clicklift flange

Provides a secondary form of retention by mechanically engaging with the road finishing layers, which would otherwise butt up against the side of the frame.



# OVERCOMING A COMMON PROBLEM

Before Clicklift, there were two common methods of installing manhole covers on developments, each with its own perceived advantages and its own significant disadvantages.

## METHOD 1 HIGH DAMAGE RISK

The cover is installed proud of the binding layer, leaving the manhole cover and frame susceptible to construction traffic damage.



Covers are installed level with the final surface layer removing the need for re-install



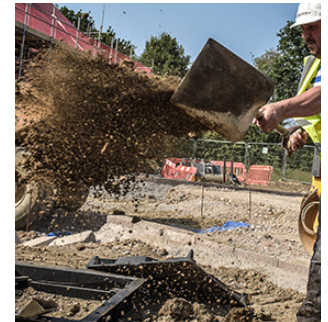
Covers and frames are exposed to potential site damage.

## METHOD 2 EXPENSIVE AND DISRUPTIVE

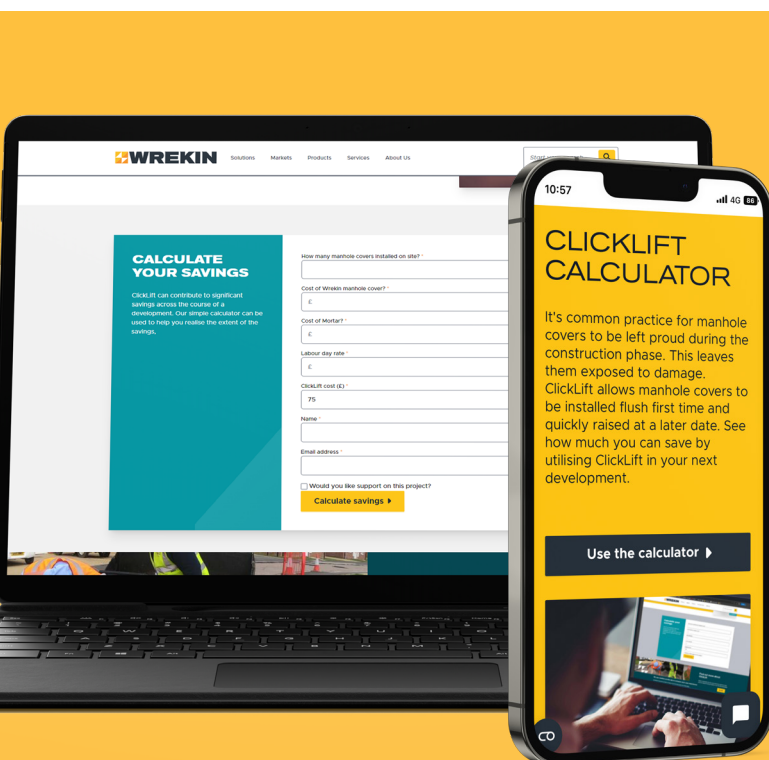
The cover is installed level with the binding layer, needing to be dug out and raised to the level of the final surface layer (typically 30-60mm).



Reduces exposure of manhole covers and frames to site damage



Requires re-installation of manhole frame and cover.



## SAVINGS CALCULATOR

Clicklift will save you time, effort, money and lower your environmental impact, including carbon emissions, by removing the need to dig out and reinstall your existing ironwork.

See how much you can save by utilising Clicklift in your next development, with our handy online savings calculator.



[wrekinproducts.com/calculate](https://wrekinproducts.com/calculate)



# WITH CLICKLIFT

## SIMPLE RAPID INSTALLATION

Clicklift is incredibly simple to install with minimal tools required. See for yourself just how quickly the Clicklift component is installed, raising the frame to the final adoptable road surface.



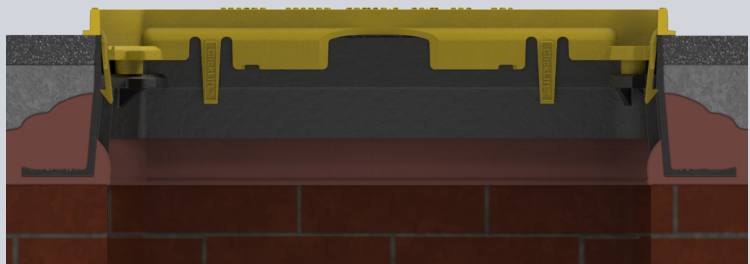
Watch the  
installation  
video here



Firstly, remove the cover and line up Clicklift with the existing frame.



Once aligned, use a rubber mallet to firmly ensure that Clicklift is in place.



Once Clicklift has been installed, re-place the cover into the now heightened frame.



For full installation instructions, please see our installation guide online at [wrekinproducts.com/clickliftinstall](https://wrekinproducts.com/clickliftinstall) or for more information, please call our sales team on **01543 440440** or email [sales@wrekinproducts.com](mailto:sales@wrekinproducts.com)





## CASE STUDY

# GUILD HOMES

### CLICKLIFT SAVES HOUSING DEVELOPMENT TIME AND MONEY

Clicklift has proven to be a huge success, after being installed as part of a £50m housing development in north east Scotland. The developers, family-run Guild Homes (Tayside) Ltd, have been so impressed that they have demonstrated the product to construction colleagues - and intend to use it in further developments.

Robin Guild, operations director of the Forfar-based firm, which he runs with his brother Mark, said: "Everyone thought it was a good product. We even had four or five different people involved in construction who came to see it and all were impressed."

Robin continued: "We no longer have to cut round and break out manhole covers, build the frames and covers up to finished level and then patch the tar around it. All in all, we are minimising the introduction of a potential weak spot in the tar and saving massively on labour - the process is so quick and simple."

"The product gives you confidence because of how tightly it clicks in and remains solid and secure, even when driven over by the tar wagons and paving machine."

“

We **initially ordered 20 Clicklift frames** but, as soon as we **realised how good they were** to use, **we increased our order to 50**. The system has worked extremely well for us and we were **impressed with how much it reduced costs and saved time**. ”

**Robin Guild**

Operations Director, Guild Homes (Tayside) Ltd







“

This system provides housing developers, like Guild Homes, and contractors with **big savings in terms of time, money and hassle** and allows whole phases of estates to have their covers raised to the final surfacing level in as little as a few hours. ”

### Simon Turner

Commercial Director, Wrekin Products

In the early stages of a housing development, the manhole covers and frames are set flush with the top of the binder layer. The use of Clicklift eliminates the resources needed to break out and build up these manhole frames once the final road surface is to be laid.

Simon Turner, commercial director at Wrekin, said: “With Clicklift, the original cover and frame are installed at the finished binder layer level and then, prior to the finished surface layer being applied, the manhole cover is simply and quickly raised with a Clicklift frame extender.

Guild Homes introduced Clicklift to its award-winning Strathmore Fields development of 236 homes on Kirriemuir Road, Forfar. In the first and second phases, with 122 properties already occupied, they raised 45 covers using Clicklift. Phase three is under construction, with phase four due to be ready by the end of 2023.

As a former supplier to us in a previous career, Robin told Simon about an idea he'd had for a product to prevent the issue of mud penetrating manhole covers and ultimately blocking the drains.

Robin added: “While we were talking, Simon told me about Clicklift and I was immediately interested. Knowing the



work involved in lifting ironwork, I was keen to give it a trial. We approached Scottish Water and our local roads authority, which adopts the new roads once complete, and both were happy for us to trial it.”

“As a company, we believe in doing things properly and not cutting corners. We use quality components, and our aim is to finish everything to a standard that we would be happy to live with ourselves, and that includes the quality of the manhole covers and frames that we use.”

“It's such a simple idea that begs the question why it had never been thought of before. I think that within two or three years there will be large numbers of people using Clicklift. It almost halves your cost and takes a fraction of the time to use when compared to the traditional method of raising ironwork.”



# THE ULTIMATE GROUNDWORKER PACKAGE



## MEET THE RANGE

- ▶ Armadillo manhole cover protector shell is a reusable shell that is compatible with both Highway and Tristar manhole covers.
- ▶ Armadillo gully grate protector shell is compatible with Tristar gullies when installed proud of the binder course.



## ARMADILLO

### THE HARD HAT FOR YOUR IRONWORK

Armadillo is a complete range of protector shells, designed to be placed over manhole covers and gully grates to provide enhanced protection during the construction phase.

Armadillo provides protection from construction site traffic, including tracked vehicles, and can be easily removed when the final surfacing is completed. This ensures manhole covers and gully grates can start their service life in 'as new' condition to optimise longevity.



Learn more  
about Armadillo



Armadillo offers benefits for everyone that bring cost, time and effort savings. In fact, all involved in the process of specifying, procuring, installing and maintaining ironwork and drainage systems will find benefits.

#### ▶ No jet washing

Save valuable time and money by eliminating the need to jet wash muddy manhole covers.

#### ▶ No cracked ironwork

Significantly reduces the risk of cracking to ironwork which can lead to rejection by adopting authorities.

#### ▶ No unidentified ironwork

The bold yellow coated shell and grille plates make it easier for operatives to identify and avoid ironwork.

#### ▶ No silt or chemicals

Helps to stop debris from entering the chamber and drainage system, at the source.

#### ▶ No need for specialist teams

Removes the need for specialist teams and specialist equipment saving time, resources and money.

#### ▶ No excavation

When used with Clicklift, ironwork can be fitted right first time, removing the need to excavate to raise or reinstall.



# UNIPAK™

## RAPID-SET BEDDING MORTAR

Unipak mortar is a rapid-set, high strength bedding mortar designed to prevent bedding failure, and is suitable for all UK BS EN 124-2 applications.

It can be used on its own or with Uniform chamber adjustment units which provide strength, durability and reduce material usage.



### Simple to use

Easy to mix, manipulate and form. Unipak has low notch sensitivity and high slump resistance. Installation is simple, using conventional tools.



### Exceeds the standards

Exceeds CD 534, ideal for BS EN 124 applications (Group 1 to 4), certified for highway use by BBA HAPAS (Highway Authorities Product Approval Scheme).



### Early road opening

Unipak cures rapidly, in as little as 25 minutes, reducing inconvenience to road users while minimising operatives' exposure to a potentially hazardous construction environment.



### Easy installation and storage

Simple to install with conventional tools. Unopened containers can be stored in a cool, dry location, away from extremes of temperature for up to 9 months.



Learn more  
about Unipak



### GRITBLOCKER

Gritblocker is an anti-blockage keyway insert which promotes health and safety, and simply fits into the manhole cover keyway preventing debris from blocking the opening, allowing a lifting key to be inserted.



Learn more



### SCREWLIFT

Screwlift is our simple and rapid manhole frame levelling system and is suitable for use with nearly all of our D400 and E600 manhole covers and gully grates.



Learn more





#### Product Features

- ▶ Raises Tristar & Highway D400 manhole covers to suit the final surface level.
- ▶ Four fixed raising heights; 30, 40, 50 & 60mm.
- ▶ No special tools or skill required for installation.
- ▶ Significantly reduces time taken to raise ironwork.

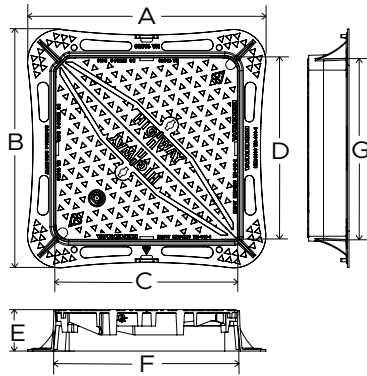
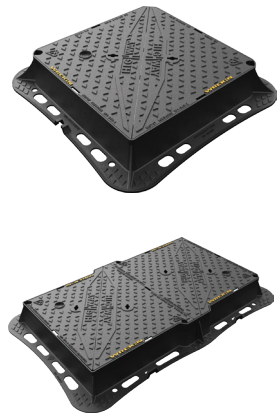
STOCK CODE	OVERALL FRAME (A x B mm)	CLEAR OPENING (C x D mm)	FRAME DEPTH (E mm)
CLICKLIFT6030	640 x 640	600 x 600	30
CLICKLIFT6040	640 x 640	600 x 600	40
CLICKLIFT6050	640 x 640	600 x 600	50
CLICKLIFT6060	640 x 640	600 x 600	60
CLICKLIFT6730	715 x 715	675 x 675	30
CLICKLIFT6740	715 x 715	675 x 675	40
CLICKLIFT6750	715 x 715	675 x 675	50
CLICKLIFT6760	715 x 715	675 x 675	60

## CLICKLIFT COMPATIBILITY CHART

STOCK CODE	SIZE (mm)	COMPATIBLE PRODUCT (TRISTAR)		COMPATIBLE PRODUCT (HIGHWAY)	
		100mm depth	150mm depth	100mm depth	150mm depth
CLICKLIFT6030	600 x 600 x 30	DMTOD4/6060/KT	DMTOD6/6060/KT	DMTOD4/6060/KH	DMTOD6/6060/KH
CLICKLIFT6040	600 x 600 x 40				
CLICKLIFT6050	675 x 675 x 50				
CLICKLIFT6060	675 x 675 x 60				
CLICKLIFT6730	600 x 600 x 30	DMTOD4/6767/KT	DMTOD6/6767/KT	DMTOD4/6767/KH	DMTOD6/6767/KH
CLICKLIFT6740	600 x 600 x 40				
CLICKLIFT6750	675 x 675 x 50				
CLICKLIFT6760	675 x 675 x 60				



## HIGHWAY D400 MANHOLE COVERS - RECTANGULAR

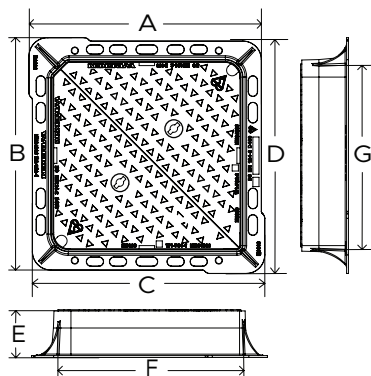
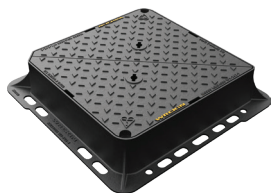


### Product Features

- ▶ 70+PSRV tested at top surface of chequer.
- ▶ Enlarged frame corners help to dissipate load minimising bearing pressure.
- ▶ Indexed corners ensure correct orientation first time, every time.
- ▶ Mechanical lifting points are provided.
- ▶ Can be retrofitted with a customer or application specific ID badge.
- ▶ Safety keyway prevents accidental disengagement of the lifting key during the handling process.
- ▶ Meets CD 534 v0.1.0 flange area requirements & less than 2.1 N/mm<sup>2</sup> bedding pressure.

STOCK CODE	OVERALL FRAME (A x B mm)	CLEAR OPENING (C x D mm)	FRAME DEPTH (E mm)	BASE OPENING (F x G mm)
DMTOD4/6060/KH	810 x 810	600 x 600	100	620 x 620
DMTOD4/6767/KH	885 x 885	675 x 675	100	700 x 700
DMTOD6/6060/KH	810 x 810	600 x 600	150	620 x 620
DMTOD6/6767/KH	885 x 885	675 x 675	150	695 x 695

## TRISTAR D400 MANHOLE COVERS - RECTANGULAR



### Product Features

- ▶ 70+PSRV tested at top surface of chequer.
- ▶ Enlarged frame corners help to dissipate load minimising bearing pressure.
- ▶ Indexed corners ensure correct orientation first time, every time.
- ▶ Safety keyway prevents accidental disengagement of the lifting key during the handling process.

STOCK CODE	OVERALL FRAME (A x B mm)	CLEAR OPENING (C x D mm)	FRAME DEPTH (E mm)	BASE OPENING (F x G mm)
DMTOD4/6060/KT	760 x 760	600 x 600	100	620 x 620
DMTOD4/6767/KT	830 x 830	675 x 675	100	700 x 700
DMTOD6/6060/KT	760 x 760	600 x 600	150	620 x 620
DMTOD6/6767/KT	830 x 830	675 x 675	150	700 x 700





All information in this catalogue is subject to change without notice. While efforts have been made to make this catalogue helpful and accurate, Wrekin Products Ltd. does not warrant the accuracy of information obtained from this catalogue. Where errors or omission are brought to the attention of Wrekin, amendments will be made as quickly as possible.



**Tel.** 01543 440 440  
**Fax.** 01543 440 444  
**Email.** [sales@wrekinproducts.com](mailto:sales@wrekinproducts.com)

[wrekinproducts.com](http://wrekinproducts.com)

Wrekin Products Limited.  
Unit 1a, Europa Way  
Britannia Enterprise Park  
Lichfield, Staffordshire  
WS14 9TZ

