

**SCAN
FOR
MORE
INFO**

Recessed Cover for Paving Infill

This range of covers and frames for paving infill is particularly suited to town centre developments where replacement of existing service covers is required to facilitate infill with blocks or stone to match the surrounding area. The slide out feature they provide allows easy access by a single operative. They are available in a large range of sizes including bespoke clear openings and cover depths.

KEY ATTRIBUTES

- ✓ Hot dip galvanised to BS EN ISO 1461
- ✓ Manufactured from Mild Steel
- ✓ One man task – slide out covers
- ✓ Tapered covers sides for ease of removal
- ✓ Removable centre support bars for controlled slide out of covers
- ✓ To take 5 tonne or 11.5 tonne slow moving wheel loads
- ✓ Cover base mesh for resin fixing of paving

AVAILABLE OPTIONS

- ▶ Lock & Lift
- ▶ Service indicator badge
- ▶ Alternative recess depths
- ▶ Bespoke sizes
- ▶ Alternative loadings
- ▶ Full frame flange
- ▶ Variation of lifting points

MATERIAL OPTIONS

- ▶ Mild steel galvanised to BS EN ISO 1461
- ▶ 70 microns (Standard)
- ▶ Additional galv coating 100 microns
- ▶ Additional galv coating 140 microns
- ▶ Stainless steel grade 304
- ▶ Stainless steel grade 316





In Situ - Jersey



In Situ - Paul Street, London

SPECIFICATION

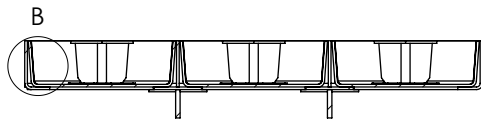
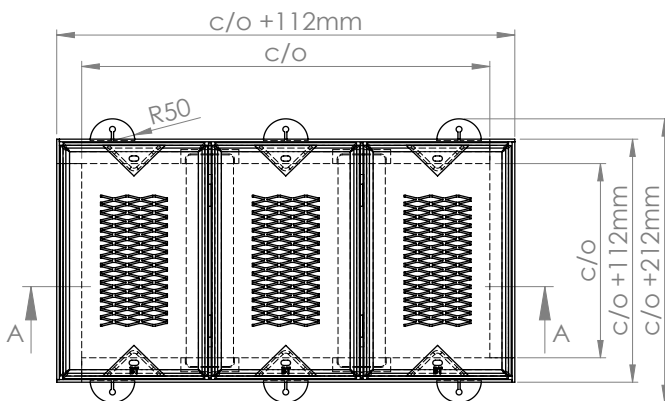
LOADING TABLE

WREKIN LOADING CODE	SLOW MOVING WHEEL LOAD (TONNE)
 N	5.0
 X	11.5

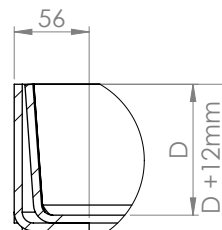
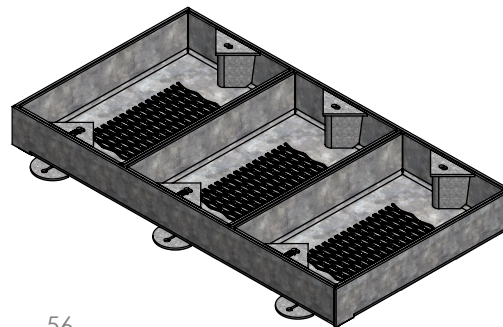
DIMENSIONS

Recess depth is variable to suit infill / loading requirements.

Overall frame depth = Recess depth + 12 mm



SECTION A-A
SCALE 1 : 12



DETAIL B
SCALE 1 : 4

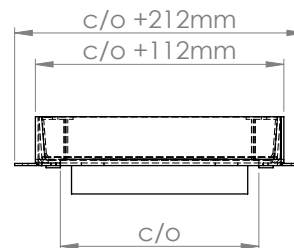
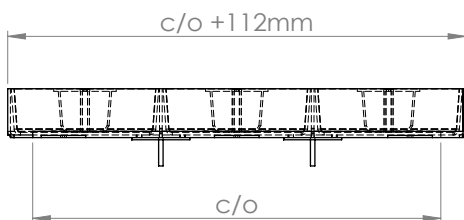


Diagram Key

AxB - Overall Frame Size	CxD - Over Top of Frame	FxG - Clear Opening	E - Frame Depth
--------------------------	-------------------------	---------------------	-----------------



FM32898