



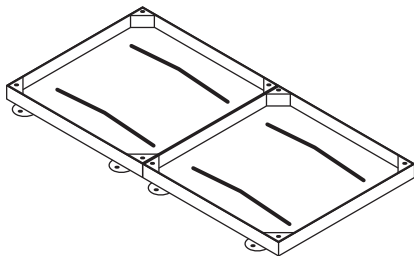
**SCAN
FOR
MORE
INFO**

Galvanised Mild Steel for Screed / Concrete Infill

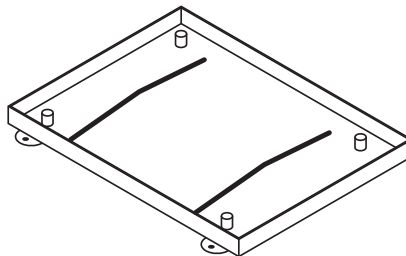
This range of recessed covers is designed to be in-filled with a range of floor finishes; including, screed, concrete, tiles, wood, composite material (e.g. resin bound gravel). They are available in a large range of sizes, including bespoke clear opening dimensions to suit individual requirements.

KEY ATTRIBUTES

- ✓ Four locking screws
- ✓ Neoprene seals to provide odour egress / water ingress resistance
- ✓ Hot dip galvanised to BS EN ISO 1461
- ✓ Threaded lifting points protected by cover locking screws
- ✓ 55 mm recess depth
- ✓ Recessed cover for Concrete / Tile / Resin Bound Gravel
- ✓ Manufactured from Mild Steel



Twin cover supplied with removable centre support



Cover with barrel lifting eyes, minimising cover visible in finished surface

AVAILABLE OPTIONS

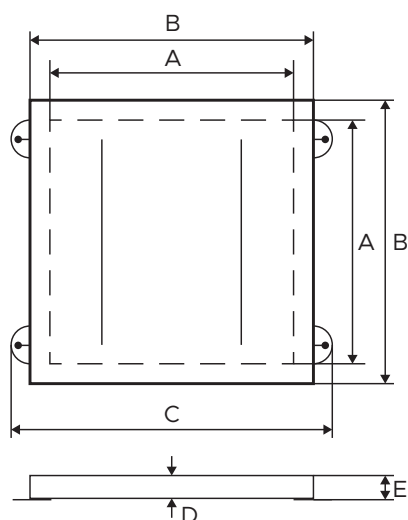
- ▶ Brass edged (frame dimensions will vary from those shown)
- ▶ Stainless steel edge (grade 304)
- ▶ Barrel lifting eyes
- ▶ Service indicator badge
- ▶ Full external flange
- ▶ Safety grille
- ▶ Powder coating
- ▶ Secondary sealing plate
- ▶ Alternative tray depth
- ▶ Square to round opening
- ▶ Security screw locking
- ▶ Multiple lids

MATERIAL OPTIONS

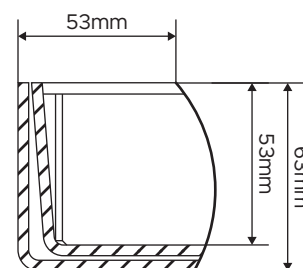
- ▶ Galvanised mild steel
- ▶ Stainless steel grade 304
- ▶ Stainless steel grade 316

RECESSED ACCESS COVERS

LOCKING BOLT & LIFTING KEY DETAILS (THREADED LIFTING EYES)		STOCK CODE
Locking screws	M8 x 60 slotted stainless steel countersunk	
Unlocking key	Flat head screwdriver	
Lifting key	M10 threaded key	KEYS/M10



FRAME DIMENSIONS	
A	Clear opening
B	Dim A + 106mm
C	Dim B + 100mm
D	55mm Recess
E	63mm Frame depth



Cover and frame cross section

LOADING TABLE		
WREKIN LOADING CODE	SLOW MOVING WHEEL LOAD	PRODUCT TYPE CODE
M	2.5 tonne	C271
N	5 tonne (when fully filled with grade C35 concrete)	C271



Image shows barrel lifting eye option.

LOADING TABLE		
WREKIN LOADING CODE	SLOW MOVING WHEEL LOAD (tonne)	COMPARATIVE FACTA CLASS
K	0.5	A
L	1.5	AA
M	2.5	AAA
N	5.0	B
P	6.5	C
X	11.5	D

