

Before installation, ensure all work is carried out in accordance with site-specific policies, environmental management plans, and relevant health and safety (EHS) practices.

Always use appropriate PPE and follow best practices for manual handling and working around drainage systems.

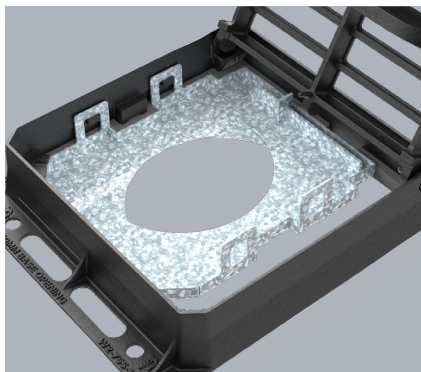
### KIT INCLUDES:

- ▶ Insert plate
- ▶ Bucket
- ▶ Filtration bag



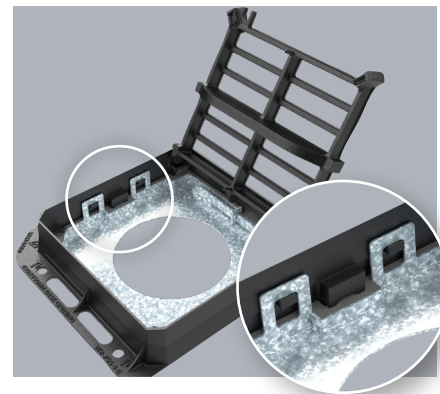
### Opening the gully

Hinge open the gully grating past 90 degrees to prevent accidental closure. Ensure the gully is clear of debris before installing the SiltShield system.



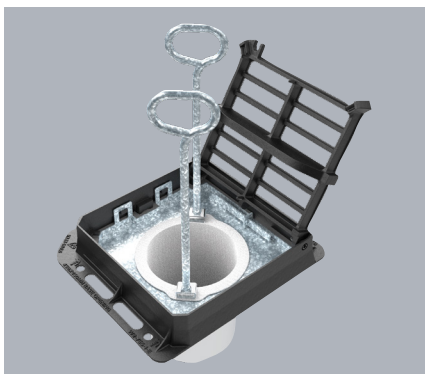
### Positioning the insert plate

Slide the insert plate into its closed position so that it can clear the gully's internal features as it is lowered into the frame.



### Securing the insert plate

Slide extend the insert plate outward until the steel hanger hooks securely engage onto the designated receiving points inside the frame on both sides.



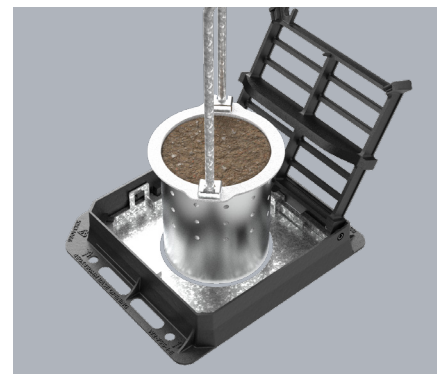
### Installing the bucket & filtration bag

Place the filtration bag inside the bucket, wrapping the elastic seam over the rim edge. Lower the bucket, with the bag fitted, into the gully using lifting keys.



### Closing the gully grating

Carefully close the hinged gully grating, ensuring it rests securely in place and sits flush with the frame's top surface.



### Silt removal & maintenance

Maintenance frequency depends on silt accumulation- empty when nearly full. Use long-handled lifting keys to remove the bucket safely, empty collected debris into an appropriate container, and reinsert securely.

